



SERIES 80

1-1/2" x 1-1/4" End Suction Centrifugal Pump

SERIES 80 end suction centrifugal pumps are close-coupled to standard NEMA "C" face motors. Open adaptor protects motor. All models are available in cast iron, bronze or aluminum construction to suit a wide variety of liquids.

All fasteners are stainless steel to reduce corrosion. Impellers are dynamically balanced to improve efficiency and bearing life.

Standard carbon / ceramic / Viton mechanical seal is self-adjusting and corrosion resistant to handle almost any liquid.

Completely tested "Wet End" PumPAKs are available without motors. The MP PumPAK® can be mounted to standard NEMA C frame motors in just minutes.

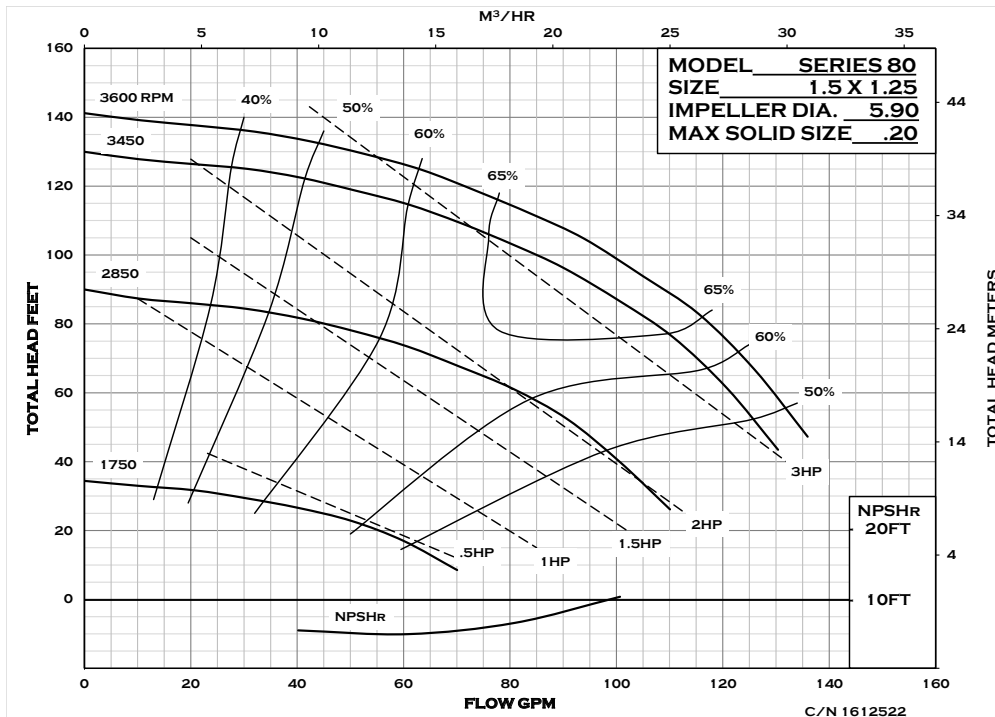
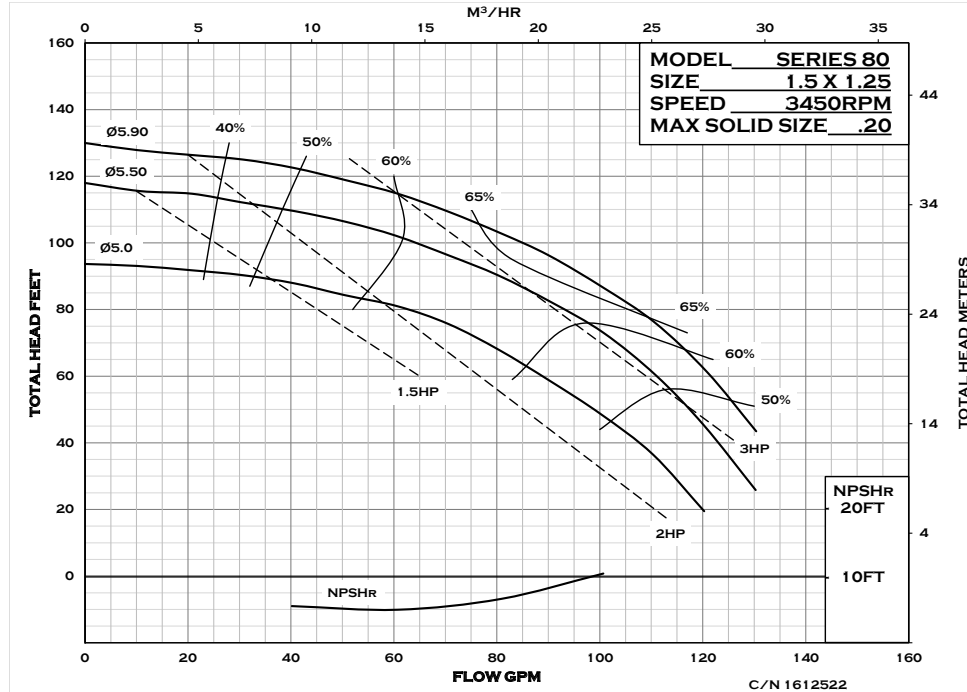
SPECIFICATIONS:

Suction / Discharge	1-1/2" x 1-1/4" NPT
Materials of Construction	Bronze, Cast iron
Flow	Up to 80 GPM (18.1 m ³ /h)
Head Feet	Up to 139' (42 m)
Impeller	5.9" (149.86 mm) enclosed
Motor	Up to 3 HP (2.2 kW)
Seal	Special seal material combinations available (consult factory), Standard carbon / ceramic / Viton
Drive Options	Hydraulic motor .37 cu. in. (6.06 cm ³) Hydraulic motor .45 cu. in. (7.37 cm ³) Hydraulic motor .58 cu. in. (9.50 cm ³) PumPAK® (without motor) Close coupled 56C Close coupled 145TC Pedestal
Max Solid Size	.13" (3.3 mm)

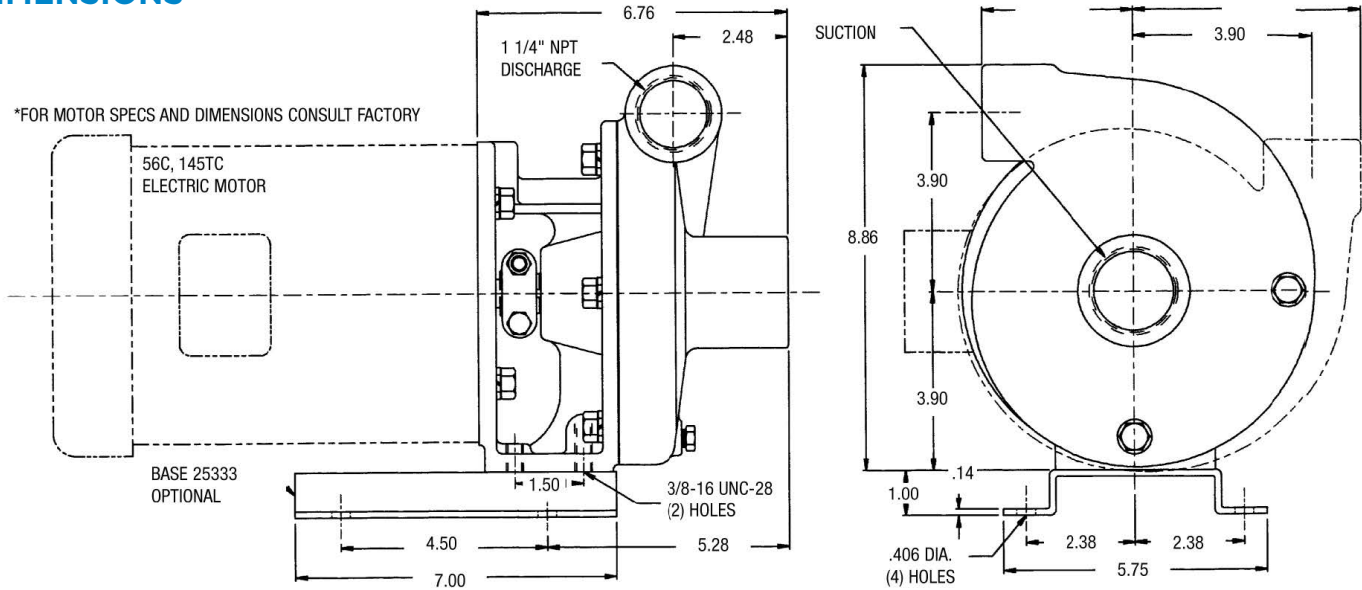
Application:

- Agricultural
- Commercial
- Industrial
- OEM

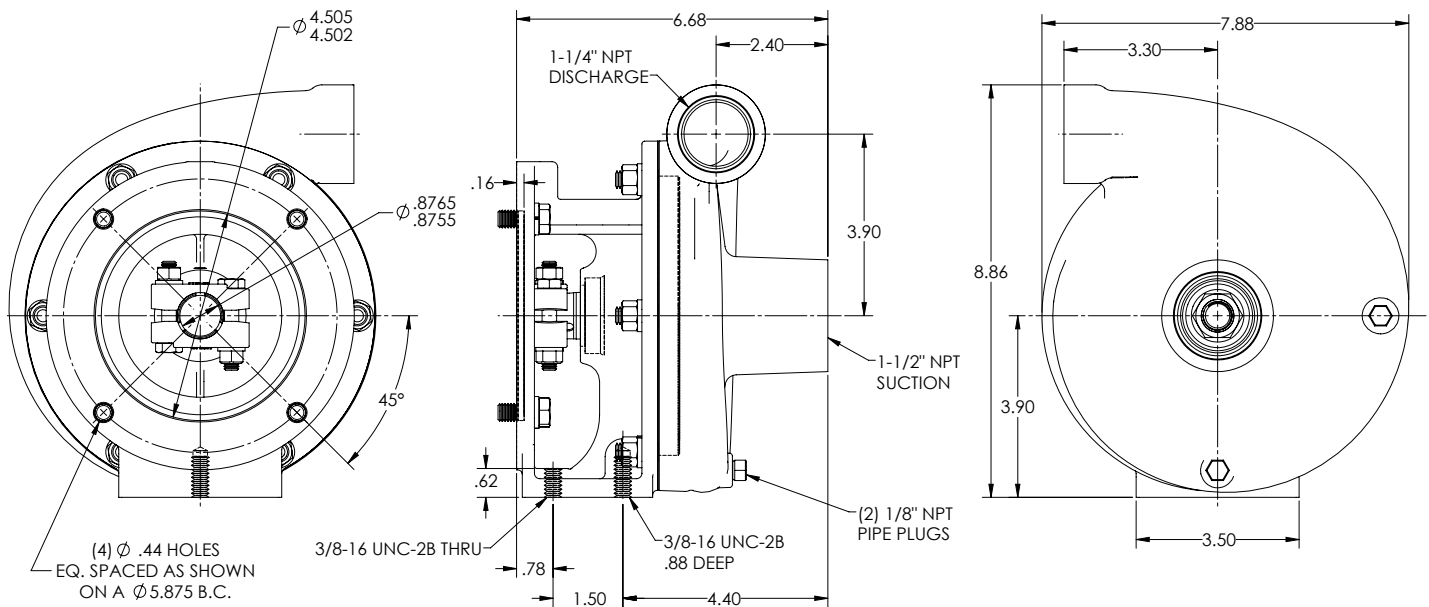
PERFORMANCE CURVES



DIMENSIONS



S-80 PUMPAK INSTALLATION (MP25669)



* For complete parts lists and troubleshooting guidance, please refer to the MP Pumps Installation Operation & Maintenance (IOM) Manual.